

UL

SYSTEMSCATALOGUE
UL Fire Detection Systems



WHY HOCHIKI?

COMPANY OVERVIEW

Established in Japan 1918, Hochiki is an independent, multi-national, publicly listed company with over 1700 employees across the globe. One of the world's leading manufacturers of commercial and industrial fire detection and emergency lighting solutions, Hochiki has acquired global acceptance as the benchmark for high-integrity and long-term reliability.

Hochiki's facilities in Japan, the United States of America and Europe design and manufacture products and provide technical support suited to local standards and customer requirements. Total commitment to meeting the needs of individual national markets has reinforced the company's global reputation, resulting in Hochiki products being installed in many prestigious sites and in over 80 countries worldwide.

For over 45 years, Hochiki America has been a supplier of quality smoke detectors to the fire alarm industry. Many of their customers are well-recognized companies such as Simplex (over 20 years), Silent Knight (over 20 years), Radionics, Bosch Potter, Napco and Fike. These longlasting relationships are no coincidence - they are due to the fact that Hochiki offers the highest in quality workmanship at competitive pricing. Quality is "built in" using only the finest in raw materials and the most advanced automated testing and manufacturing equipment available anywhere.



Respondents rated product quality as either 'very good' or excellent



Customers stated our market reputation is 'very good' or 'excellent'



Customers are most likely to recommend our products

*STATS TAKEN FROM THE HOCHIKI CUSTOMER SERVICE SURVEY

HOCHIKI ASIA PACIFIC OFFICES



Hochiki Corporation (HQ)



Hochiki Asia Pacific Pte. Ltd.



Hochiki (Thailand) Company Limited



Hochiki Ho Chi Minh Representative Office



Hochiki Jakarta Representative Office



Hochiki Manila Representative Office



THE WORLD'S FINEST FIRE DETECTION SYSTEMS SINCE 1918

TABLE OF CONTENTS

PAGE 2 :

- COMPANY OVERVIEW

PAGE 3 :

- TABLE OF CONTENTS

PAGE 4 :

- INTELLIGENT ADDRESSABLE PANELS

PAGE 5 :

- PRODUCT OVERVIEW

PAGE 6 :

- TECHNICAL SPECIFICATIONS

PAGE 7 :

- ANNUNCIATOR & GRAPHICS APPLICATION

PAGE 8 - 9 :

- PANEL PERIPHERALS

PAGE 10 - 11 :

- NETWORK SCHEMATIC

PAGE 12 - 13 :

- ANALOG ADDRESSABLE PANELS

PAGE 14 - 15 :

- INTELLIGENT ADDRESSABLE DETECTORS

PAGE 16 - 17 :

- BASES & SOUNDER BASES

PAGE 18 - 19 :

- MODULES

PAGE 20 - 21 :

- PULL STATIONS

PAGE 22 - 23 :

- CONVENTIONAL FIRE ALARM SYSTEMS

PAGE 24 - 26 :

- CONVENTIONAL CONTROL PANEL

PAGE 27 - 28 :

- CONVENTIONAL DETECTORS

PAGE 29 - 30 :

- CONVENTIONAL PULL STATION

PAGE 31 :

- VOICE EVACUATION PANELS

PAGE 32 - 36 :

- NOTIFICATION APPLIANCES

PAGE 37 - 39 :

- TESTING ACCESSORIES

INTELLIGENT ADDRESSABLE PANELS

SINGLE APERTURE



DOUBLE APERTURE
INCLUDES ZONE LED
MODULE AND PRINTER



STANDARD FEATURES

- UL Listed (10th Edition), FM and CSFM Approved
- 2 to 8 loop or 2 to 16 loop versions
- 400mA loop current
- Programmable NACs; 4 Class B or 2 Class A, all with internal synchronization
- 5.25 A or 10.25 A power supply options
- 3 programmable inputs and 5 programmable relay outputs
- 7 inch, full-color resistive touch screen with intuitive user interface
- Up to 24 programmable soft "function keys"
- Up to 64 user login accounts
- Hard-wired fire and trouble routing inputs and outputs
- Modular and expandable electronics
- 400 sub-address points per loop (800 per loop module)
- 5000 programmable cause and effects; over 50,000 inputs and outputs
- Can be networked with programmable functionality
- Programming via USB port to PC or memory stick
- L@ti-View Graphical PC User Interface
- Up to 127 sensors & modules, plus 127 digital addressable sounder bases, for a total of 254 points possible per loop

SIGNALING



Product Overview

The all new L@titude product range of fire alarm control equipment combines the very latest hardware and software to produce a control and indication system, which is powerful and sophisticated, yet simple to use and understand. The flexibility of the L@titude platform is such that it can be re-configured to realize many other control and indication applications, with direct integration into intelligent buildings.

Moving away from the simple, price driven competitive model used by most manufacturers today, the L@titude concept is designed to add value to System Designers, Integrators, Service Providers, and end users. Developed from the “ground up” and using some of the most advanced technology available, L@titude is designed as one of the most powerful, intelligent, and technically robust fire alarm products available.

Not only do the products and services offered under the L@titude brand provides solutions to the most technically challenging applications in life safety, L@titude will deliver added value, market advantage, and a competitive edge to your business.

Technical Specifications

2 to 8 LOOP (4 SLOT) ENCLOSURE	
Size	Standard Cabinet - 420mm (W) x 590mm (H) x 153mm (D), or 16.5in (W) x 23.2in (H) x 6in (D) Deep Cabinet - 420mm (W) x 590mm (H) x 203mm (D), or 16.5in (W) x 23.2in (H) x 8in (D)
Construction	Mild sheet steel enclosure, 1.5mm, 16 gauge
Cable Entry	Standard Cabinet - 28 knockouts top, 19 knockout back, 1 knockout each side, 2 knockout bottom Deep Cabinet - 38 knockouts top, 19 knockout back, 1 knockout each side, 2 knockout bottom
Optional Semi-Flush Mounting Kit	Semi-Flush Mounting Collar Kit KM5FCRD - Red KM5FCGY - Gray KM5FCBS - Black
Battery Capacity	Standard Cabinet - Up to 28 Ah (Power Sonic PS-12280) Deep Cabinet - Up to 40 Ah (Power Sonic PS-12400)

2 to 16 LOOP (8 SLOT) ENCLOSURE	
SIZE	8 Slot Standard Cabinet - 540mm (W) x 720mm (H) x 160mm (D), or 21.3in (W) x 28.3in (H) x 6.3in (D) 8 Slot Deep Cabinet - 540mm (W) x 720mm (H) x 212mm (D), or 21.3in (W) x 28.3in (H) x 8.3in (D)
Construction	Mild sheet steel enclosure, 1.5mm, 16 gauge
Cable Entry	Standard Cabinet - 38 knockouts top, 25 knockout back, 2 knockout each side, 2 knockout bottom Deep Cabinet - 50 knockouts top, 25 knockout back, 2 knockout each side, 2 knockout bottom
Battery Capacity	Standard Cabinet - Up to 28 Ah (Power Sonic PS-12280) Deep Cabinet - Up to 40 Ah (Power Sonic PS-12400)

ALL MODELS	
Finish	Epoxy powder coated
Color	Lid & Box - Red, Gray or Black Control Plate - RAL7016
Power supply voltage	120 V AC or 240 V AC
Power supply rating at 24V DC	5.25 A (charges up to 60 Ah) 10.25 A (charges up to 100Ah)
Display	Full color 800 x 480 LCD with resistive touch screen and automatic backlight dimming
Software zones	2,000
Software groups	5,000
Cause and Effects	5,000
Event log	10,000 events, 1 second resolution. Filterable and printable
Detection loops	2 to 16 added 2 at a time (S758 dual loop cards)
Detection loop current	400 milliamps each
AUX 24V Output	2; each rated at 900 mA
NACs	4; each rated at 2.5A (1.3A for System Sensor devices). 4 Class B or 2 Class A
Programmable Relay Outputs	5; 30 V DC 1 Amp
Programmable Inputs	3; designed to be activated by voltage-free contacts
Network Connections	Optional network card provides communication for networking 64 fire control panels
NAC Synchronization	Internal Support of System Sensor, Wheelock, Gentex and Amseco protocols
Printer (OPTIONAL)	40 column, front-loading thermal
Zone LED Indicators (OPTIONAL)	Up to 3 banks of 48 (144) as standard
Maximum Number of Nodes on a Network	64 UL Listed for 64 nodes

ELECTRICAL SPECIFICATIONS

PART NUMBER	MODEL	NAME	STANDBY CURRENT	ALARM CURRENT	NOTES
	See Below	*L@titude Control Panel	.350A	.450A	
	See Below	Vision Annunciator	.341A	.341A	
0101-02710	S408	10.25A Power Supply	.080A	.080A	
0101-02690	S406	5.25A Power Supply	.078A	.078A	
0101-01220	S723	Network Module	.080A	.080A	
0101-01230	S758	Dual Loop Module	.115A	.115A	Figures exclude SLC devices
0101-01280	S788	Media Gateway Module	.114A	.114A	
0101-01250	S791	8-Channel Relay Module	.010A	.160A	Alarm all 8 relays active
0101-01330	S771	Zone LED Module	.005A	.005A	+.003A per active LED
0101-01290	S768	Thermal Printer	.000A	1.500A	

Current draw includes LCD main processor board, main back board, System A board, and System B boards only

INTELLIGENT ADDRESSABLE PANELS



*** L@titude Panel Featuring Multiple Languages & Counting ... ***

ENGLISH (EN)
BULGARIAN (BG)
CROATIAN (HR)
ESTONIAN (EE)
HUNGARIAN (HU)
PORTUGUESE (PT)
ROMANIAN (RO)
SERBIAN (RS)
SLOVAKIAN (SK)
TURKISH (TR)

CZECH (CZ)
DUTCH (NL)
ITALIAN (IT)
RUSSIAN (RU)
SLOVENIAN (SI)
SPANISH (ES)
TAIWANESE / TRAD CHINESE
VIETNAMESE
BANGLA
THAI

In the near future ...
DANISH (DA)
NORWEGIAN (NO)
FINNISH (FI)
SWEDISH (SV)
FRENCH
ARABIC
POLISH
...





The FireNET L@titude Network Vision Annunciator is the most qualified annunciator on the market. It is a full-color graphical display and touch-screen and represents the most versatile annunciator for life safety systems available today. The Annunciator is a full-function fire alarm repeater that is configurable and application-flexible for use in a variety of applications, such as hospital nursing stations and elevator alarms.

FireNET L@titude Network Vision Annunciators can be configured to fully replicate fire control panel functionality, or to operate as simple, display-only devices for applications where access to fire alarm controls are inappropriate.

L@TITUDE NETWORK VISION ANNUNCIATOR

LFC00NC-10 (Red), LFC00NC-40 (Gray), LFC00NC-60(Black)

STANDARD FEATURES

- Full color 7" (800 x 480 pixel) interface
- Replicates information displayed at the FACP
- Automatic display brightness adjustment
- Internal buzzer
- Connects via control panel network terminals
- Low current, 24V DC powered
- Configurable functionality
- Enable key-switch
- Sheet steel enclosure
- Surface or semi-flush enclosure options available

L@TI-VIEW GRAPHICS APPLICATION

STANDARD FEATURES

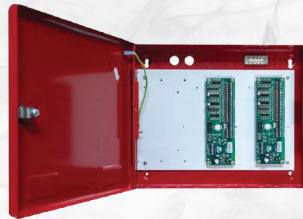
- Reports configuration mismatch errors – ensuring that the graphics system is properly maintained and updated whenever there are any panel configuration revisions
- Powerful event log filtering and reporting
- Manage the state of the fire system using a combination of graphical images and system controls
- Programmable macro buttons to perform panel control operations
- Full map navigation using configurable buttons or map areas
- Device analog value reporting
- Perform device and zone disablements/enabements

This professional-grade graphics system will complement the new generation of FireNET L@titude Fire Alarm Control Panels, while also being backward-compatible with the current analog product.

L@ti-View enables the creation of a 2D map of any site or building to monitor fire safety and detection, and automatically switches to an area where a fire device has been activated to allow immediate viewing and investigation of an event. It will also display the relevant emergency assembly and fire control points. Fully-configurable on-site using an administrator login, L@ti-View supports dual screens allowing a dedicated screen for the 2D graphic map and a separate screen for system management. It also reports any configuration errors, ensuring that the graphics system is maintained and updated whenever the panel configuration is revised.



OPTIONAL PANEL PERIPHERALS



DUAL LOOP PANEL MODULE (S758)

The Dual Loop Panel Module monitors loop device status and provides status to the panel processor. It holds device configurations and operates in a standalone manner when catastrophic failures occur.

16 CHANNEL I/O INTERFACE CARD (K6006)

The 16 Channel I/O Interface enhances the versatility of the alarm system by providing additional input and output capabilities to the L@titude Fire Alarm Control Panel. Inputs or outputs can be selected for up to 16 individual channels, and are configured in the same way as devices connected to addressable loops of the panel. The 16 Channel I/O Interface can be configured to contribute or act upon cause and effect logic.

MEDIA GATEWAY™ PANEL MODULE (S788)

The Media Gateway™ Panel Module provides connectivity to monitoring centers using IP (Sur-Gard), or dialup connectivity. The Media Gateway™ may also be used to meet integration application requirements.

8 CHANNEL RELAY PANEL MODULE (S791)

The 8 Channel Relay Panel Module has 8 voltage-free changeover relay contacts, each of which can be individually programmed. All outputs are configurable in the same way as devices connected to the loops and all may be acted upon by cause and effect logic. These boards are typically used in applications which require more than the five standard relay outputs, such as signaling to other systems or plant control.

NETWORK MODULE (S723)

The L@titude Network Module provides enhanced high-speed communication for networking fire control panels. The network provided by this module can support combinations of L@titude Fire Alarm Control Panels and L@titude Vision units. L@titude Fire Alarm Control Panels can receive events from other panels in the network. The Class X networking used in conjunction with the Network Module provides tolerance against open and short circuit trouble conditions.

PRINTER (S768)

The L@titude Printer is an optional feature for printing fire system events as they occur. The printer is located on the fascia, below the Zone LEDs (if present). It is a thermal printer and never requires replacement ink. Printing is performed on heat-sensitive paper. A trouble message is reported when the paper runs out. The printer includes a front-loading feature for replacing paper rolls.

ZONE LED MODULE (S771)

The Zone LED module contains 48 LEDs and is connected to the LCD Main Processor Board of the FireNET L@titude Fire Alarm Control Panel. A maximum of three Zone LED modules can be connected to provide the fascia with 144 Zone LED indicators.

5.25 A POWER SUPPLY (S406)

5.25 Amp power supplies are capable of charging batteries with capacities ranging from 7 to 60 Ah. The power supply accepts input voltages of 115 VAC or 230 VAC. The 5.25A power supply supplies 4A for panel power and 1.25A for battery charging.

10.25 A POWER SUPPLY (S408)

10.25 Amp power supplies are capable of charging batteries with capacities ranging from 12 to 100 Ah. The power supply accepts input voltages of 115 VAC or 230 VAC. The 10.25A power supply supplies 8A for panel power and 2.25A for battery charging.

4 CHANNEL NAC PANEL MODULE (S793)

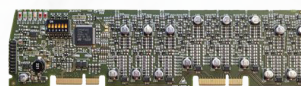
Additional NAC output capability can be added to by using 4 Channel NAC Modules. These boards have 4 supervised NAC outputs, each of which can be individually programmed. The circuits can be configured for class A or B operation. These circuits can be configured to act upon cause and effect logic.

8 CHANNEL CONVENTIONAL ZONE PANEL MODULE (S792)

The 8 Channel Conventional Zone Panel Module has 8 supervised detection circuits (Class B). Each circuit can support up to 20 conventional detectors and approved devices. Individual circuits may be configured for trigger resistor or short circuit activation. These circuits may be used for any of the standard input actions and can be configured to contribute to cause and effect logic. Each pair of circuits (e.g., 1 and 2, 3 and 4, etc.) can be joined to form a single Class A configuration.

16 CHANNEL I/O INTERFACE PANEL MODULE (S772)

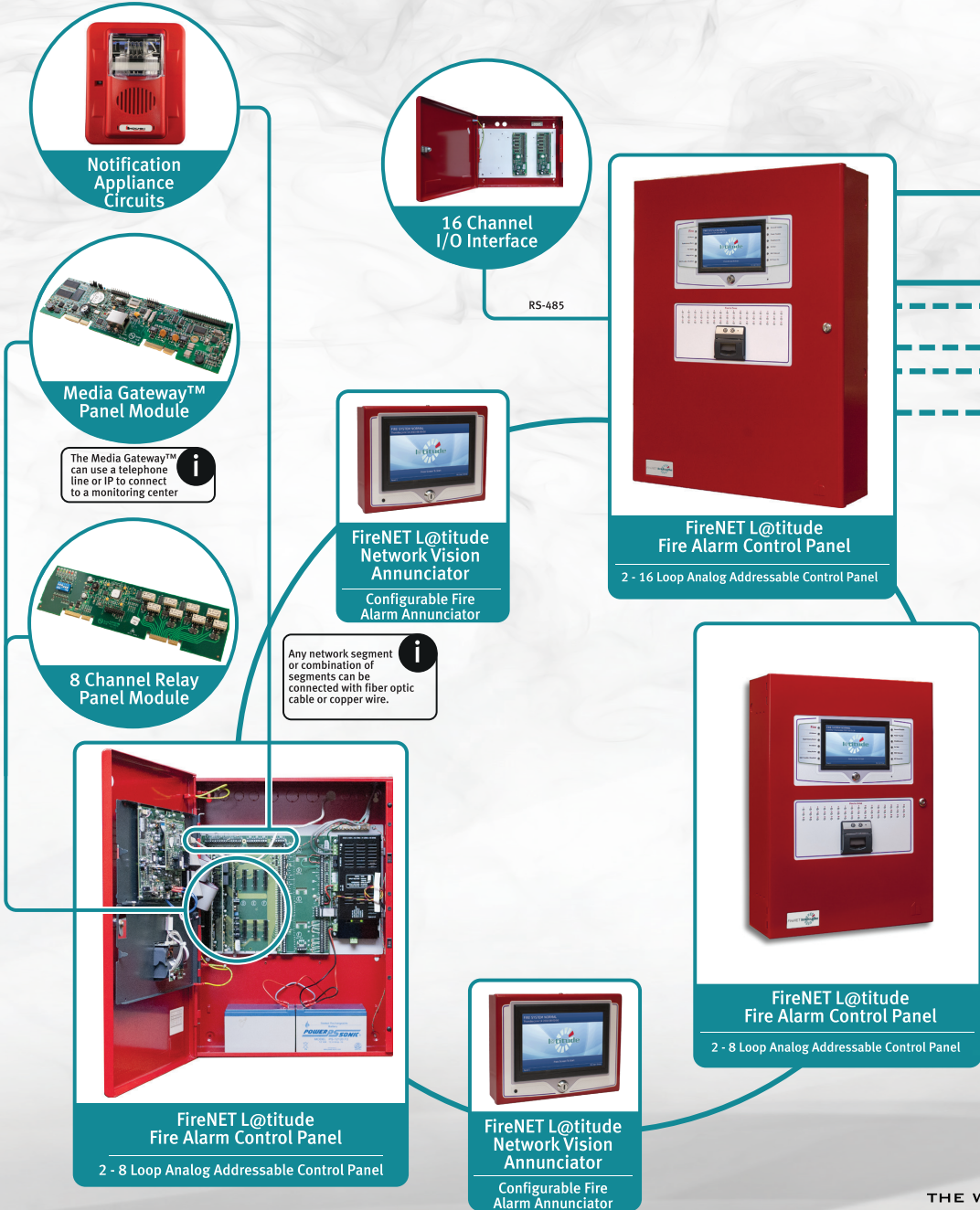
The 16 Channel I/O Interface Panel Module will provide the same functionality as the 16 Channel I/O Interface Card, with the convenience of a plug-in-module.



OPTIONAL PANEL PERIPHERALS

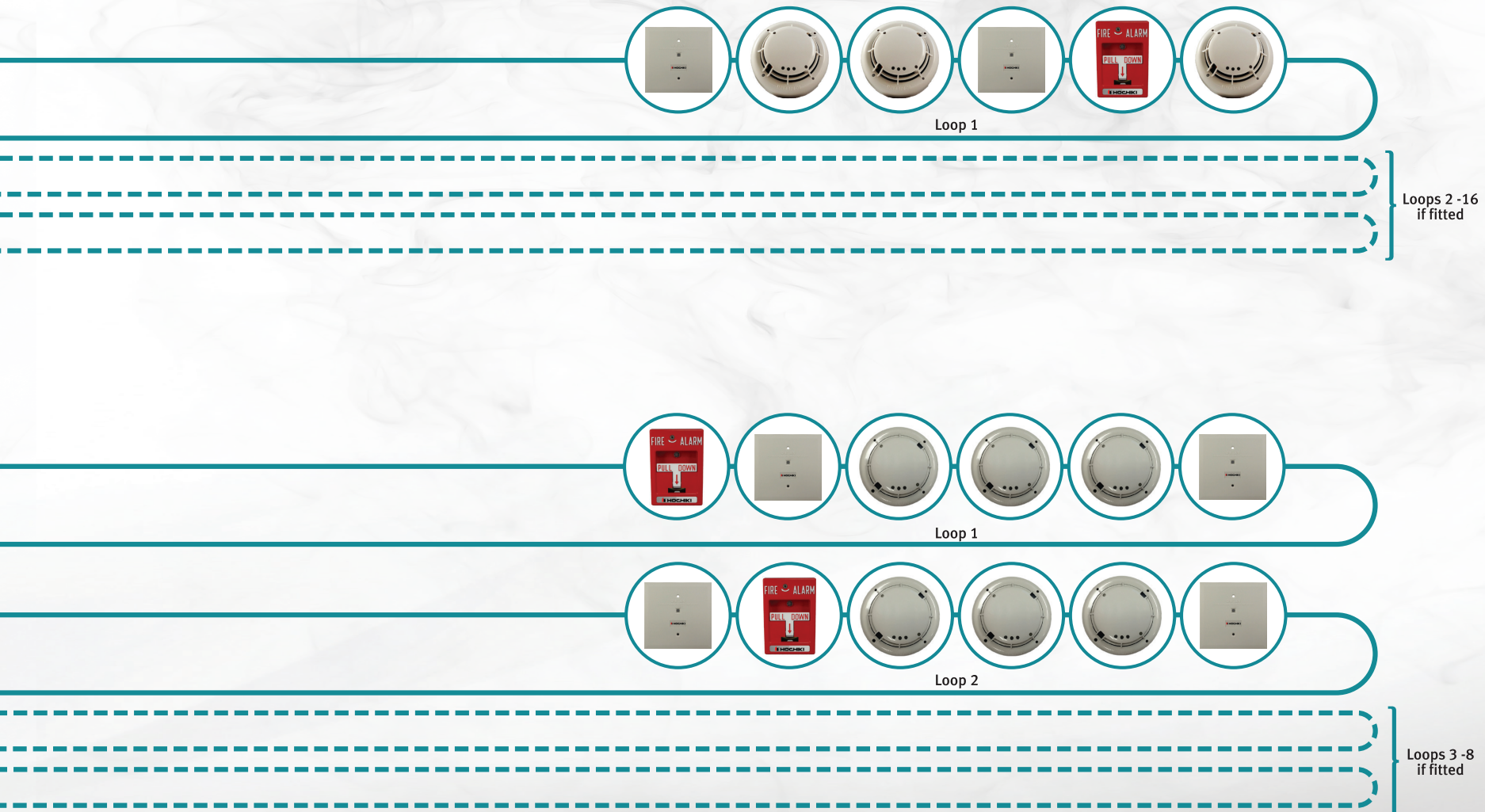


NETWORK SCHEMATIC



NETWORK SCHEMATIC

SLC Devices



ANALOG ADDRESSABLE PANELS

FIRENET PLUS® : FNP-1127-R/220V

ANALOG ADDRESSABLE CONTROL PANEL

STANDARD FEATURES

- UL 864 9th Edition Listed, FM Approved, CSFM Approved
- 1 SLC (2nd SLC Optional)
- Analog design using Hochiki's advanced DCP protocol for fast & robust communication
- Network capability up to 64 panels with 500 network-wide software zones
- RS-485 bus for panel networking (optional)
- Up to 127 sensors & modules, plus 127 analog sounder bases, for a total of 254 points possible per loop
- Uses standard wire, no shielded or twisted pair required on SLC loops
- Large 8-line x 40-character LCD display (320 characters)
- Built-in RS-232 interface for programming via a PC
- Supports Class B, Class A and Class X SLC loops
- 3 on board programmable Form C relays rated at 1 Amp at 30VDC
- 2 auxiliary power outputs, each rated 360mA at 24 VDC
- 2 on-board Class B NAC circuits rated at 2.3 Amps each (special application) and 1.6 Amps each (regulated continuous)
- Auto-learn feature
- Fire Drill function and Walk Test function
- Powerful & versatile Cause & Effect programming

FN-LCD-S-R

SERIAL ANNUNCIATOR

STANDARD FEATURES

- UL Listed, FM Approved, CSFM Approved
- 320 character liquid crystal display (8 line x 40 character)
- Same controls as the FireNET Plus® fire panel (Reset, Panel Sounder Silence, Lamp Test, Alarm Silence, Re-sound Alarm, Fire Drill, Programmable Function, More Events, More Fire Events, Enter and Exit)
- Up to 15 FN-LCD-S serial annunciators may be connected to a FireNET Plus® control panel
- Resides on the FireNET Plus® slave RS-485 line
- Local piezo sounder for event notification
- Supports user codes and firefighter key to enable access and controls
- Powered by FireNET Plus® auxiliary 24VDC or UL fire listed auxiliary 24VDC supply
- Built-in help and alarm information screens
- Surface or flush mount (using trim ring)
- Fire Drill function
- Available color(s) : red or gray

Specifications subject to change without prior notice



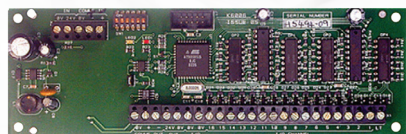


FNP-1127-SLC (FireNET Plus®)

SINGLE SLC LOOP EXPANDER

STANDARD FEATURES

- Adds one SLC loop to the FireNET Plus® (FNP-1127E series) control panel
- The SLC loop is capable of 127 sensors/modules, plus 127 analog sounder bases, for a potential total of 254 addresses
- The FireNET Plus® 1127E control panel supports one FNP-1127-SLC, for a total of two SLC loops per panel
- Supports Class A, B and X wiring methods per NFPA 72 (Class X requires isolators)
- Fully supervised & power limited SLC loop
- Uses standard wire; shielded/twisted pair is not required on SLC loops

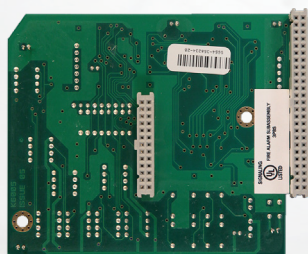


FN-4127-IO

16 CHANNEL INPUT/OUTPUT BOARD (RS-485 BUS DEVICE)

STANDARD FEATURES

- 16 channels of input/output points
- 32 IO boards per FireNET Plus® panel (512 channels of input/output points)
- Each channel configurable as input/output point
- Inputs are opto-isolated non-supervised pulldown type triggered by "dry" contact from input source
- Outputs are open collector transistor pulldown type (100mA max each) that provide "wet" voltage output
- Simple 4 wire connection to control panel (2 for power, 2 for data)
- All inputs/outputs can be assigned to global functions, any event category, and used in network-wide Cause and Effect logic
- Can be mounted locally within control panel enclosure or remotely via FN-ACC accessory enclosure up to 4,000 feet from the panel



FN-4127-NIC

NETWORK INTERFACE CARD

STANDARD FEATURES

- Allows for the expansion of up to 64 panels on a FireNET Plus® system
- Enables information to be transmitted between control panels
- Network protocol designed for tolerance to interference and data corruption
- Each card configured to a unique address through use of a dipswitch
- Transmission distance of up to 4,000 feet
- Uses standard type Belden cable suitable for RS-485 applications
- Network-wide Cause & Effect logic

Specifications subject to change without prior notice

ACD-V

MULTI-CRITERIA PHOTOELECTRIC SMOKE/HEAT/CO SENSOR

STANDARD FEATURES

- Low profile - only 2.00" high, including base
- Simple and reliable device addressing
- Supports 16 operational modes
- Automatic compensation for sensor contamination
- Uses the noise-immune Digital Communication Protocol (DCP), which utilizes interrupts for fast response to fires
- Two built-in power/alarm LEDs
- Programmable non-polling LEDs
- Non-directional smoke chamber
- Fully adjustable heat detection-135°F to 150°F
- 10 years CO sensor life span
- Vandal resistant security locking feature

ACC-V

MULTI-CRITERIA PHOTOELECTRIC SMOKE/HEAT SENSOR

STANDARD FEATURES

- Low profile - only 2.00" high, including base
- Simple and reliable device addressing
- Automatic compensation for sensor contamination
- Uses the noise-immune Digital Communication Protocol (DCP), which utilizes interrupts for fast response to fires
- Two built-in power/alarm LEDs
- Programmable non-polling LEDs
- Non-directional smoke chamber
- Fully adjustable heat detection-135°F to 150°F
- UL maximum spacing of 70 feet (heat detection only)
- Vandal resistant security locking feature

Specifications subject to change without prior notice





ALN-V

PHOTOELECTRIC SMOKE SENSOR

STANDARD FEATURES

- Low profile - only 2.00" high, including base
- Simple and reliable device addressing
- Automatic compensation for sensor contamination
- Built-in fire test feature
- Uses the noise-immune Digital Communication Protocol (DCP), which utilizes interrupts for fast response to fires
- Two built-in power/alarm LEDs
- Programmable non-polling LEDs
- Non-directional smoke chamber
- Vandal resistant security locking feature

ATJ-EA

FIXED TEMP/RATE OF RISE HEAT SENSOR

STANDARD FEATURES

- Low profile - only 2.00" high, including base
- Simple and reliable device addressing
- Uses the noise-immune Digital Communication Protocol (DCP), which utilizes interrupts for fast response to fires
- Two built-in power/alarm LEDs
- Programmable non-polling LEDs
- Rate of rise temperature threshold = 15°F/min
- Adjustable threshold temperature = 135°F - 194°F (UL)
- Adjustable threshold temperature = 32°F - 194°F (Actual)
- UL maximum spacing of 70 feet
- Vandal resistant security locking feature

Specifications subject to change without prior notice

HSB-NSA-6 / YBN-NSA-4

ADDRESSABLE SENSOR BASES

STANDARD FEATURES

- UL & ULC Listed
- 2-wire loop connection
- Designed for use with all addressable sensors
- Plastic tamper lock feature
- Rugged design with screw terminals for wiring connections
- Optional remote LED wiring configuration available

SCI-B6 / SCI-B4

SHORT CIRCUIT ISOLATOR SENSOR BASES

STANDARD FEATURES

- UL Listed
- Ability to detect short circuit conditions
- Designed for use with all DCP analog sensor
- Available in 4 and 6 inch models
- Built-in LED indication upon short circuit condition
- Contains a security locking tab for tamper protection

Specifications subject to change without prior notice





ASB

ADDRESSABLE SOUNDER BASE

STANDARD FEATURES

- UL269 and UL464 Listed
- Programmable evacuation codes—Continuous, Temporal Code 3 and March Code
- Separate addresses range (128–254) for easy Cause and Effect programming
- Uses the noise-immune Digital Communication Protocol (DCP), which utilizes interrupts for fast response to fires
- Programmable activation by General Alarm, by zone and/or by individual address
- Up to 127 Sensors and 127 ASB's can be on one SLC loop
- High sound pressure level (85dB SPL at 10 ft.)

ASBL

ADDRESSABLE SOUNDER BASE - LOW FREQUENCY

STANDARD FEATURES

- UL269 and UL464 Listed
- 520 Hz Low Frequency Sounder
- Programmable evacuation codes—Continuous, Temporal Code 3 and March Code
- Separate addresses range (128–254) for easy Cause and Effect programming
- Uses the noise-immune Digital Communication Protocol (DCP), which utilizes interrupts for fast response to fires
- Programmable activation by General Alarm, by zone and/or by individual address
- Up to 127 Sensors and 127 ASB's can be on one SLC loop
- Programmable activation by General Alarm, by zone and/or by individual address

Specifications subject to change without prior notice

The analog addressable module product line utilizes the patented Hochiki Digital Communication Protocol (DCP) for fast reliable communication to the control panel. The modules cover a variety of applications including contact monitoring, output, relay function, and short circuit isolation. These modules operate on Class A or Class B SLC loops, allow 127 devices per DCP loop and are available in bone color.

DCP-FRCMA/-I

FAST RESPONSE CONTACT MODULE

STANDARD FEATURES

- Provides a Class A or Class B Supervised input
- UL 864 9th Edition Listed
- Uses the noise-immune Digital Communication Protocol (DCP), which utilizes interrupts for fast response to fires
- Up to 127 modules can be placed on a single SLC Loop
- Bi-Colored indicating LED provides module status
- Yellow LED indicates a short circuit condition (FRCMA-I version)
- Can be programmed to monitor Normally Open (NO) or Normally Closed (NC) contacts
- Accepts up to 14 AWG wire
- Available model
DCP-FRCMA
DCP-FRCMA-I

DCP-FRCME-M

STANDARD FEATURES

- UL 864 9th Edition Listed
- Single input contact monitor
- Fast, reliable contact monitoring utilizing the Hochiki DCP (Digital Communications Protocol)
- 127 devices can be used per DCP loop
- Can be programmed to monitor Normally Open (NO) or Normally Closed (NC) contacts
- Operates on Class A or Class B SLC loop
- Accepts up to 12 AWG wire
- Available model
DCP-FRCME-P
DCP-FRCME-M

DCP-DIMM

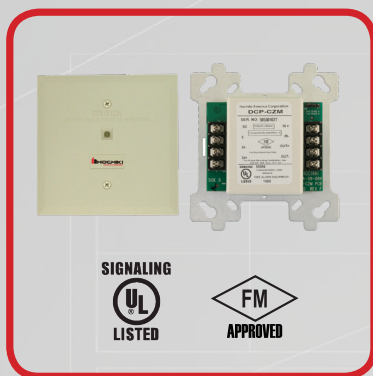
DUAL INPUT MONITOR MODULE

STANDARD FEATURES

- Provides two Class B Supervised Inputs
- Monitoring points, only uses one SLC address
- UL 864 9th Edition Listed
- Uses the noise-immune Digital Communication Protocol (DCP), which utilizes interrupts for fast response to fires
- Up to 127 modules can be placed on a single SLC Loop
- Bi-Colored indicating LED provides module status
- Can be programmed to monitor Normally Open (NO) or Normally Closed (NC) contacts
- Accepts up to 14 AWG wire



Specifications subject to change without prior notice



DCP-CZM

CONVENTIONAL ZONE MODULE

STANDARD FEATURES

- UL 864 9th Edition Listed
- Provides an address point for a zone of up to 25 conventional smoke detectors
- Blinks green when polled. Latched on red (controlled by panel) when activated
- Device address can be programmed with a handheld programmer. Device address- ranges from 1 to 127
- Compatible with Class B and Class A wiring
- Auxiliary power source provides power for the zone of detectors
- Compatible with conventional detectors, SOC-24V, SOC-24VN, SLR, SIJ, DCD, DFE and SIH series
- Compatible with TH series linear heat cables from Proline Protection Systems

R2M SERIES

DUAL RELAY MODULE

STANDARD FEATURES

- Provides a Class A or Class B Supervised Output circuit rated for 2A at 24VDC
- UL 864 9th Edition Listed
- Uses the noise-immune Digital Communication Protocol (DCP), which utilizes interrupts for fast response to fires
- Up to 127 modules can be placed on a single SLC Loop
- Bi-Colored indicating LED provides module status
- Flexible application
- Accepts up to 14 AWG wire
- Programmable evacuation codes-Continuous, Temporal Code 3 and March Code
- Programmable activation by General Alarm, by zone and/or by individual address
- Available model
 - DCP-R2ML
 - DCP-R2ML-I
 - DCP-R2MH
 - DCP-R2MH-I

DCP-SOM-A/AI

SUPERVISED OUTPUT MODULE

STANDARD FEATURES

- Provides two independently configurable Form C relay contacts, using one SLC address
- UL 864 9th Edition Listed
- Uses the noise-immune Digital Communication Protocol (DCP), which utilizes interrupts for fast response to fires
- Up to 127 modules can be placed on a single SLC Loop
- Accepts up to 14 AWG wire
- Programmable activation by General Alarm, by zone and/or by individual address
- Available model
 - DCP-SOM-A
 - DCP-SOM-AI

Specifications subject to change without prior notice

DCP-AMS-KL

INTELLIGENT ADDRESSABLE MANUAL PULL STATIONS

STANDARD FEATURES

- Single Action (Pull)
- Addressable integrated design
- All metal construction
- Extremely easy to operate
- Bi-colored status LED indicates Standby and Alarm conditions
- Enclosed switch with glass rod (included)
- Terminals accept up to 14AWG wire
- Surface mount back box available
- ADA compliant
- Key lock for reset using standard CAT 30 key

DCP-AMS-KL-LP

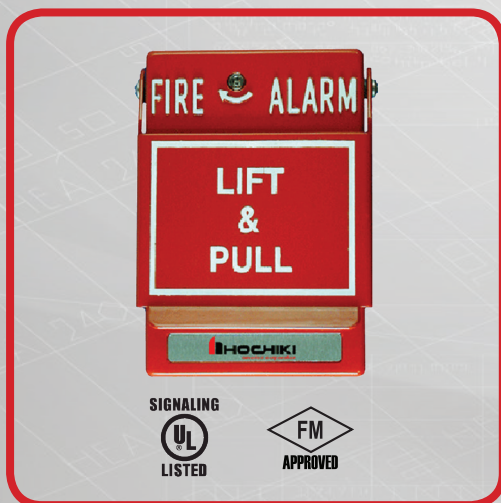
INTELLIGENT ADDRESSABLE MANUAL PULL STATIONS

STANDARD FEATURES

- Dual Action (Lift & Pull)
- Addressable integrated design
- All metal construction
- Extremely easy to operate
- Bi-colored status LED indicates Standby and Alarm conditions
- Enclosed switch with glass rod (included)
- Terminals accept up to 14AWG wire
- Surface mount back box available
- Key lock for reset using standard CAT 30 key

Specifications subject to change without prior notice





DCP-AMS

INTELLIGENT ADDRESSABLE MANUAL PULL STATIONS

STANDARD FEATURES

- Single Action (Pull)
- Addressable integrated design
- All metal construction
- Extremely easy to operate
- Bi-colored status LED indicates Standby and Alarm conditions
- Enclosed switch with glass rod (included)
- Terminals accept up to 14AWG wire
- Surface mount back box available
- ADA compliant (except LP models)

DCP-AMS-LP

INTELLIGENT ADDRESSABLE MANUAL PULL STATIONS

STANDARD FEATURES

- Dual Action (Lift & Pull)
- Addressable integrated design
- All metal construction
- Extremely easy to operate
- Bi-colored status LED indicates Standby and Alarm conditions
- Enclosed switch with glass rod (included)
- Terminals accept up to 14AWG wire
- Surface mount back box available

Specifications subject to change without prior notice

CONVENTIONAL FIRE ALARM



CONVENTIONAL CONTROL PANEL

HCA

CONVENTIONAL FIRE ALARM CONTROL PANEL

STANDARD FEATURES



The HCA conventional panel is available in 2, 4, or 8 zones. The 4 and 8 zone models support releasing of agents and water. The HCA is supported by our full line of conventional devices.

- UL864 9th Edition / NFPA Compliant
- Fully programmable using simple menu options
- Installer friendly and supports flush or surface mount without a separate trim-ring
- Built-in two-line (16 Characters for each line) LCD display provides easy to read information
- 15 Key control buttons for easy programming, reset and silencing
- Real time clock
- Event History log (256 events) with Date/Time stamp which can be viewed from LCD display
- Compatible with wide range of detection devices
- 4 Programmable Supervised NAC outputs
- 6.5 Amp power supply
- Switchable 120/240VAC 50/60 Hz Power supply
- 3 Programmable output patterns for NAC circuits
- Gentex Sync Protocol Built-in
- Built-in Dialer for HCA-2D, HCA-4D and HCA-8D Only
- Supports Releasing of Agents & Water on HCA-4 & HCA-8 models
- 3 programmable general purpose relays
- Dedicated alarm and trouble relays
- Built-in walk test feature
- Supports up to two 12V, 18Ah Backup batteries
- Supports one Remote Annunciator via RS-485
- Available model
 - HCA-2/220V
 - HCA-4/220V
 - HCA-8/220V

Specifications subject to change without prior notice



HCV

CONVENTIONAL FIRE ALARM CONTROL PANEL

STANDARD FEATURES

- Fully compliant with & tested to BS EN54-2 and BS EN54-4
- 2-wire Annunciator
- Fully programmable using simple menu options
- Simple, single board construction
- Installer friendly
- Compatible with wide range of detection devices
- Two monitored NAC outputs
- 3 Amp power supply
- Auxiliary power output
- Adjustable sounder delay time
- NAC configuration options
- Zonal NAC delay detectors only
- Zonal NAC delay call points only
- Coincidence input selection
- I.S. Barrier selection by zone
- Short circuit fire by zone
- Non latching zones
- Silent zones
- Zone input delay
- Available model
HCV-2/230V
HCV-4/230V
HCV-8/230V

Specifications subject to change without prior notice

HCP-1008EDS

STANDARD FEATURES

- UL 864 9th edition Listed
- Large system capacity
- Modular design
- Each indicating circuit can be configured as Silenceable or Non-Silenceable
- Audible may be configured as Steady, Temporal Code, California Code or March Time
- Each initiating circuit can be configured as Alarm, Supervisory, Waterflow or Trouble
- Two LEDs per initiating circuit; one for Trouble and one for Status
- Initiating and indicating circuits may be individually disconnected by a DIP switch
- Configurable Signal Silence Inhibit, Auto Signal Silence, Two-Stage Operation and One Man Walk Test
- Subsequent Alarm, Supervisory and Trouble operation
- Two outputs for 4 wire resettable smoke power supply (200 mA Max. each)
- Auxiliary relay contacts for Common Alarm and Common Supervisory as well as a Common Trouble Relay (Each relay contact Form C, 28 VDC @ 1 Amp (resistive))
- RS-485 Interface for HRA-1000 Remote Multiplex Annunciators
- Interface for Remote Trouble Indicator
- Easy configuration via push buttons and DIP switches on the front panel
- Fully site or field programmable indicating circuits and auxiliary relays
- Extensive transient protection
- Slide-in labels for zone identification
- 6 Amp or 12 Amp power supplies available
- Removable door for easy installation and servicing
- Removable terminal blocks for easy wiring and servicing

HCVR-3

STANDARD FEATURES

- UL 864 Listed and FM Approved
- Three detection zones
- Any single zone or any combination of zones can be configured to release
- Fully programmable using simple menu options
- Simple, single board construction
- Installer friendly
- Compatible with wide range of detection devices
- Configurable first stage NAC delays
- Configurable detection delays
- Built-in Manual Release switch and separate circuit
- Compatible with FirePro Xtinguish™
- Compatible with various releasing valves
- Configurable releasing delays up to 60 seconds in 5 second intervals
- Configurable releasing duration up to 5 minutes in 5 second intervals
- Releasing countdown timer displayed on the LCD
- Supports up to seven HCVR-SDU or HCVR-AB
- Built-in relays for Fire, Trouble, Stage 1, Stage 2, Extract and Local Fire

Specifications subject to change without prior notice



SIGNALING
UL
LISTED



SIGNALING
UL
LISTED

FM
APPROVED



SOE-24V

CONVENTIONAL PHOTOELECTRIC SMOKE DETECTOR

STANDARD FEATURES

- High signal-to-noise and sensitivity stability are effective in a wide range of environmental conditions
 - Wide viewing angle alarm indicators
 - Automatic drift compensation and maintenance indication
 - Built-in magnetic test feature
 - Break-away, hidden locking feature for use with NS bases
 - Optimized reduction to false alarms and enhanced reaction time to real fires
 - UL 268 7th Edition listed smoke detector
 - Test with Smoke Sabre aerosol cans or the Testifire 1000/1001 or 2000/2001 with TS3 smoke capsules
- *Refer to Conventional Detectors Technical Bulletin Rev 07/21

SOE-24H

CONVENTIONAL PHOTOELECTRIC SMOKE AND HEAT DETECTOR

STANDARD FEATURES

- High signal-to-noise and sensitivity stability are effective in a wide range of environmental conditions
 - Wide viewing angle alarm indicators
 - Automatic drift compensation and maintenance indication
 - Built-in magnetic test feature
 - Break-away, hidden locking feature for use with NS bases
 - Optimized reduction to false alarms and enhanced reaction time to real fires
 - UL 268 7th Edition listed smoke detector & UL 521 7th Edition listed heat detector
 - Test with Smoke Sabre aerosol cans or the Testifire 1000/1001 or 2000/2001 with TS3 smoke capsules
- *Refer to Conventional Detectors Technical Bulletin Rev 07/21

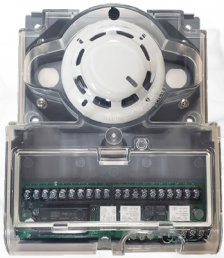
SOC-24VN

CONVENTIONAL PHOTOELECTRIC SMOKE DETECTOR

STANDARD FEATURES

- 12 or 24VDC
- 360° view of detector status LED
- Micro fine bug screen capable of rejecting steam
- Advanced engineered non-directional smoke chamber
- Low profile - only 2.00" high, including base
- 2 or 4 wire base compatibility, relay bases available
- Highly stable operation, RF/Transient protection
- Low standby current, 59µA at 24VDC
- One Bi-colored built-in power/sensitivity supervision/alarm LED
- Automatic Sensitivity window verification function meets outlined requirements in NFPA 72, Chapter 2 & 7, Inspection, Testing and Maintenance

Specifications subject to change without prior notice

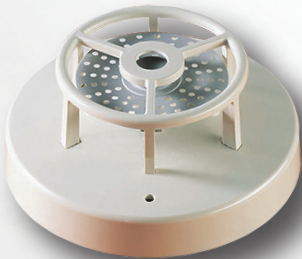


SIGNALING
UL
LISTED



SIGNALING
UL
LISTED

FM
APPROVED



SIGNALING
UL
LISTED

DH-100-P

CONVENTIONAL DUCT SMOKE DETECTOR

STANDARD FEATURES

- New Rugged Durable Housing
- Easy Smoke Testing Port
- Removal Terminal Cover
- Durable Steel Base, Silicone Gaskets, Polycarbonate Housing
- Compatible with building automation and fire alarm systems
- Installs quickly and easily
- No screens or filters to clean
- UL 268A Listed

DCD-135/190

FIXED TEMPERATURE AND RATE OF RISE HEAT DETECTOR

STANDARD FEATURES

- UL Listed, FM Approved, CSFM Approved
- Available models: 135°F fixed temperature/rate of rise (DCD-135) or 190°F fixed temperature/rate of rise (DCD-190)
- UL Listed spacing up to 60 feet by 60 feet
- 2 or 4 wire base compatibility, relay bases available
- Highly stable operation, RF/Transient protection
- Two built-in power/alarm LEDs confirm detector status (360° viewing)
- Compatible with all Hochiki America conventional bases
- Available color(s): bone or white
- Rate of rise temperature threshold: 12° / min

DFE-135/190

FIXED TEMPERATURE HEAT DETECTOR

STANDARD FEATURES

- UL Listed, CSFM Approved
- Available models: 135°F fixed temperature (DFE-135) or 190°F fixed temperature (DFE-190)
- Self-restoring
- Contact rating of 100mA
- Latching LED base available
- Available color(s): bone or white

Specifications subject to change without prior notice

SPC-24

STANDARD FEATURES

- Microprocessor based for reliability
- Simple setup and alignment with signal strength LEDs
- Provides 60 feet on center linear protection at a range of 32.8 feet to 328 feet
- Automatic compensation for signal drift or dirty lens Three field adjustable sensitivity settings
- Form A alarm and Form B trouble contacts
- Calibrated filters available to verify sensitivity (purchased separately)
- Color-coded emitter (purple) and receiver (green) labels for easy recognition
- Adjustable to one of the three obscuration settings of 25%, 50% or 70% per span
- Voltage and RF transient protection
- External red LED when alarm condition is indicated

HPS-SAK

MANUAL NON-CODED PULL STATIONS

STANDARD FEATURES

- Single Action (Pull)
- UL Listed, CSFM Listed
- All metal construction
- Extremely easy to operate
- Enclosed switch with glass rod (included)
- 10 Amps at 120 VAC
- Available in Spanish (HPS-DAH/S)

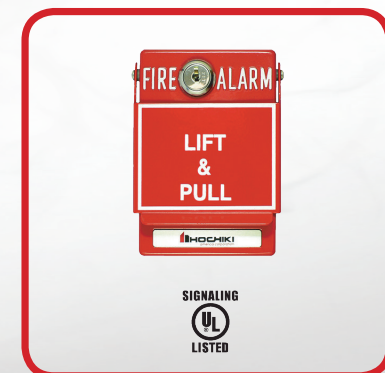
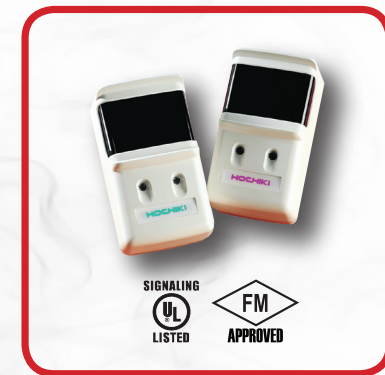
HPS-DAK

MANUAL NON-CODED PULL STATIONS

STANDARD FEATURES

- Dual Action (Lift & Pull)
- UL Listed, CSFM Listed
- All metal construction
- Extremely easy to operate
- Enclosed switch with glass rod (included)
- 10 Amps at 120 VAC
- Available in Spanish (HPS-DAH/S)

Specifications subject to change without prior notice





HPS-EX-WP

EXPLOSION PROOF/WEATHERPROOF MANUAL PULL STATION

STANDARD FEATURES

- Single Action (Pull)
- UL Listed, CSFM Listed
- Compatible with all Hochiki control panels
- All metal construction
- Rated class I group B (hydrogen) C&D, class II groups E, F, G, class III, 4X outdoor
- Weatherproof
- Corrosion-resistant construction
- Latching alarm levers
- Key-locked reset
- Optional glass break rod



HPS-SAH-WP

WEATHERPROOF MANUAL PULL STATIONS

STANDARD FEATURES

- Single Action (Pull)
- 10A, 120 VAC contacts
- Rugged die-cast aluminum housing
- Neoprene sealing gasket
- Corrosion-resistant construction
- Latching pull-down lever
- Screw terminal connections

Specifications subject to change without prior notice

FNV-MP & FNV-DP

HIGH RISE VOICE EVACUATION SYSTEMS

STANDARD FEATURES

- UL 864 9th Edition Listed
- True multiplex 6 channel distributed audio
- Integrated Fire Phone System (optional)
- Modular system - components added as needed
- Integrated 2 Channel Digital Message Repeater
- Live microphone paging to any zones
- Fast RS-485 communication protocol
- Fully supervised
- Easy installation and operation
- Natural voice sound recordings
- Built-in alarm evacuation and alert signals
- Up to 4 minute message capacity
- Compatible with 12VDC or 24VDC fire alarm panels
- UL Listed to be integrated with FireNET® 2127/4127
- 3 minute message restart on microphone key
- Up to 256 distributed panels

Specifications subject to change without prior notice





HSSPKXLP SERIES

SPEAKERS AND MULTI-CANDELA SPEAKERS AND SPEAKER/STROBES

STANDARD FEATURES

- Strobe Nominal Voltage 24 VDC
- Tamperproof Field Selectable candela options of 15, 30, 75, 95 & 115
- Speaker only models can be wall or ceiling mounted
- Unit Dimensions: 6.1" x 1.88"
- High Quality dBA Output
- Frequency Range 400-4000Hz
- Input Terminals supports 12 to 18 AWG
- Field selectable power taps: 1/8W, 1/4W, 1/2W, 1W, 2W and 4W
- Field Selectable Speaker Voltage 25 or 70.7 VRMS Standard
- Strobe maintains constant flash rate (1Hz) regardless of input voltage
- Available color(s): red or off-white
- Available model
 - HSSPK24-1575WLPR
 - HSSPK24-1575WLPWHSSPK24-1575WLPPR
 - HSSPK24-1575WLPPW
 - HSSPK24WLPR
 - HSSPK24WLPW
 - HSSPK24WLPPR
 - HSSPK24WLPPW
 - HSSPK24CLPR
 - HSSPK24CLPW
 - HSSPK24CLPPR
 - HSSPK24CLPPW
 - HSSPKCLRR
 - HSSPKCLPW

FNV-FJ

STANDARD FEATURES

- Fire Phone accessories give the FNV system two way communication capability.
- Fire Phone jacks are mounted on a Brushed Stainless Steel Single Gang Plate.

Specifications subject to change without prior notice



SIGNALING
UL
LISTED



SIGNALING
UL
LISTED



SIGNALING
UL
LISTED

FNV-FH

PORTABLE HANDSET

STANDARD FEATURES

- Available colour(s): red

FNV-TCR

TELEPHONE CABINET

- Holds 6 FNV-FH portable handset
- Surface/semi-flush mount
- Available colour(s): red

HE SERIES (HE/HES/HEH)

HORNS AND MULTI-CANDELA STROBES AND HORN/STROBES

STANDARD FEATURES

- Wall mount
- Nominal Voltage 12VDC and 24 VDC
- Tamperproof 24VDC units have field selectable candela options of 15, 30, 60, 75, and 110 candela
- 12VDC units have field selectable candela options of 15, 30, 60, and 75 candela
- Unit Dimensions: 5" high x 4.5" wide x 2.5" deep
- Input terminals supports 12 to 18 AWG
- Switch selection for high or low dBA
- Switch for chime, whoop, mechanical and 2400Hz tone
- Switch for continuous or temporal 3: (not available on whoop tone)
- Surface mount with the HSB (Hochiki surface mount box)
- Silence horn while strobes remain flashing
- Wide voltage range 8-17.5VDC (12VDC units) 16-33VDC
- Available color(s): red or off-white
- Available model
HES24-1575WR
HES24-1575WW

HES24-177WR
HES24-177WW
WHES24-75WR
WHES24-75WW
HEC24-1575WR
HEC24-1575WW
HEC24-1575PWR
HEC24-1575PWW
HEC24-177WR
HEC24-177WW
WHE24-75WR
WHE24-75WW
HEH24-WR
HEH24-WW
HES3-24PWW
HEC3-24WR
HEC3-24WW
HEC3-24PWP
HEC3-24PWW

Specifications subject to change without prior notice

HC SERIES

MULTI-CANDELA STROBES AND HORN/ STROBES

STANDARD FEATURES

- Ceiling mount
- Nominal Voltage 24 VDC
- Tamperproof Field Selectable candela options of 15, 30, 75, 95, 115 & 150
- Unit Dimensions: 6" x 2.6"
- Input Terminals support 12 to 18 AWG
- Switch Selection for High or Low dBA
- Wide Voltage Range 16-33 VDC
- Switch Selection for 2400Hz or Mechanical Tone
- Switch Selection for Continuous or Temporal 3
- Surface Mount with the HCSB (Hochiki Ceiling Surface Mount Box)
- Silence Horn While Strobes Remain Flashing
- Available color(s): red or off-white
- Available model
 - HCS24CR
 - HSC24CW
 - HCS24PCR
 - HCS24PCW
 - HCC24CR
 - HCC24CW
 - HCC34PCR
 - HCC24PCW

Specifications subject to change without prior notice



HHLF SERIES

LOW FREQUENCY HORNS

STANDARD FEATURES

- Nominal voltage 24 VDC
- Unit dimensions: 6.125" H x 5.5" W x 1.625" D
- Synchronize horn with Hochiki HTSM Synchronization Control Module
- Prewire entire system, install mounting bracket, then install signals
- Input terminals accept 12 to 18 AWG
- Produces a 520Hz square wave, temporal 3 tone
- Jumper selection for normal or loud dBA
- Temporal 4 pattern available when used with Hochiki HTSM Synchronization Module
- Temporal 4 520Hz measured per ANSI/UL 2075
- Tamperproof re-entrant style grill and locking screw (optional use)
- Available color(s): red or off-white

HHSLF SERIES

LOW FREQUENCY HORN/STROBES

STANDARD FEATURES

- Nominal voltage 24 VDC
- Unit Dimensions:
- 6-1/2" (16.5 cm) high x 5-1/2" (14.0 cm) wide x 2" (5.0 cm) deep
- Produces a 520 Hz square wave, temporal 3 tone
- Fixed candela options: 15, 110 and 177
- Jumper selection for normal or loud dBA
- Super-Slide® Bracket - Ease of Supervision Testing
- Input terminals accept 12 to 18 AWG
- Temporal 4 pattern available when used with Hochiki HTSM Synchronization Module
- Temporal 4 520 Hz measured per ANSI/UL 2075
- Tamperproof re-entrant style grill and locking screw (optional use)
- Available color(s): red or off-white

Specifications subject to change without prior notice





SIGNALING
UL
LISTED



SIGNALING
UL
LISTED



SIGNALING
UL
LISTED

HX93 SERIES

MINI-HORNS

STANDARD FEATURES

- Nominal voltage 12VDC and 24VDC
- Jumper for selectable temporal 3 or continuous tone
- Horn frequency of 3100Hz
- Input terminals support 12 to 18 AWG
- Low current consumption
- Textured finish high impact plastic faceplate
- Available color(s): red or off-white

WHE SERIES

WEATHERPROOF HORN/STROBES

STANDARD FEATURES

- Nominal voltage 24VDC
- Unit is shipped with WHES24-75 Candela Strobe or WHEC24-75 Candela Horn/Strobe
- Switch selection for high dBA
- Switch for mechanical and 2400hz tone
- Switch for continuous tone
- Input terminals supports 12 to 18 AWG
- Tamperproof re-entrant grill
- Wide voltage range of 16-33 VDC
- Separate horn and strobe functions
- Available color(s): red or off-white

FBB-150K

FIRE ALARM BELLS

STANDARD FEATURES

- Rating DC 24V
- Operating Temperature Range -10°C -40°C
- Body: Aluminum alloy die cast Baked Paint finish
- Mounting Metal: Steel, 1.2mm thickness, Chrome-plated

Specifications subject to change without prior notice

A close-up, profile view of a man wearing a yellow hard hat. He is looking upwards and to the right. The background is blurred, showing what appears to be an industrial or construction setting.

TESTING ACCESSORIES



SIGNALING
UL
LISTED



SOLO 461

CORDLESS HEAT DETECTOR TEST KIT

STANDARD FEATURES

- Includes 2 NiMH Batteries and charger
- Lightweight and simple to use
- Suits fixed temp, combination, and ROR detectors up to 194°
- Unique IR activation and Cross Air Technology for optimum energy use
- Directs heat straight at detector for rapid activation



SIGNALING
UL
LISTED



SOLO 330

AEROSOL DISPENSER

STANDARD FEATURES

- Universal, lightweight, and simple to use
- Suits detectors up to 4" in diameter, clear cup for view of detector LED
- Spring-loaded for drop ceiling; Swing frame allows for use at any angle
- For use with SOLO A4 or Smoke Centurion (M8) aerosol smoke detector testers
- UL Listed; Manufacturer Approved, Lifetime Limited Warranty



SIGNALING
UL
LISTED



SOLO 200

UNIVERSAL DETECTOR REMOVAL TOOL

STANDARD FEATURES

- For use with Solo Access Poles
- Universal design suits widest range of detectors
- Color-coded heads rotate to provide a combination of sizes and settings
- Lifetime limited warranty

Specifications subject to change without prior notice



SOLO C6

CO DETECTOR TESTER

STANDARD FEATURES

- Safe, controllable, genuine nonflammable CO gas
- Only CO tester approved for Systems Sensor and Interlogix CO Alarms
- Fast test and reset times
- UL Listed; Manufacturer Approved, Designed for use with system monitored CO detectors

SOLO A5

SOLO SMOKE AEROSOLS

STANDARD FEATURES

- Common with other pressurised aerosols,
- Solo A5 is a flammable product.
- Available in a standard 250ml can similar in price to Solo A3
- Compatible with the Solo 330 dispenser

SMOKE SABRE

2.6 OZ AEROSOL SMOKE DETECTOR TESTER

STANDARD FEATURES

- Faster detector activation and clearing
- More tests per can; lowest cost per test
- Eco-responsible 100% biodegradable sabre; ozone friendly, no CFC's
- UL Listed; Manufacturer Approved, Silicone Free

Specifications subject to change without prior notice

Your Safety, Our Technology



Hochiki Asia Pacific

82 Ubi Ave 4
#06-02 Edward Boustead Centre
Singapore 408832
T: +65 6841 9728
E: sales@hochikiasiapacific.com
W: www.hochikiasiapacific.com

9-5-0-591/ISS3/ SEP 22

Hochiki reserves the right to alter the specifications of its products from time to time without notice. Although every effort has been made to ensure the accuracy of the information contained in this document, it is not warranted or represented by Hochiki to be a complete and up-to-date description. Check online for current version.

